

Step 1 : Attach the bulkhead hanging straps to the upper tie rings in the container (bulkhead hanging straps are available in the Accessories Packet packed with the flexitank).

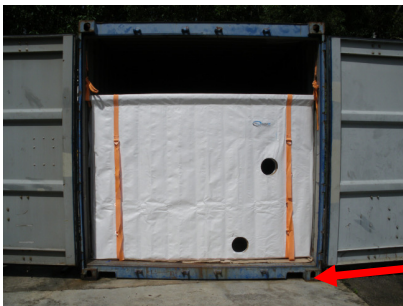
Step 2 : Place corrugated cardboard into the pocket behind woven bulkhead.



Step 3 : Insert the 1st metal bulkhead support bar to the woven bulkhead top slot. Then insert it into the container shoring slots, and hang it onto the bulkhead strap on both side of container.



Step 4 : Install the remaining 4 metal bulkhead support bars by inserting them into container shoring slots and strap them to woven bulkhead one by one. (Bulkhead height from red line is 66 inches)



Red line

Step 5 : Ensure that vertical support bar is perfectly standing behind the door lips. Install the vertical support bar by tying the vertical bar to the horizontal metal support bars tightly.

